

# State of Wyoming Corner Record

*(In compliance with the CORNER PERPETUATION AND FILING ACT, Wyoming Statutes, 1977, Section 36-11-101, et. seq., and the Rules and Regulations of the Board of Registration for Professional Engineers and Professional Land Surveyors.)*

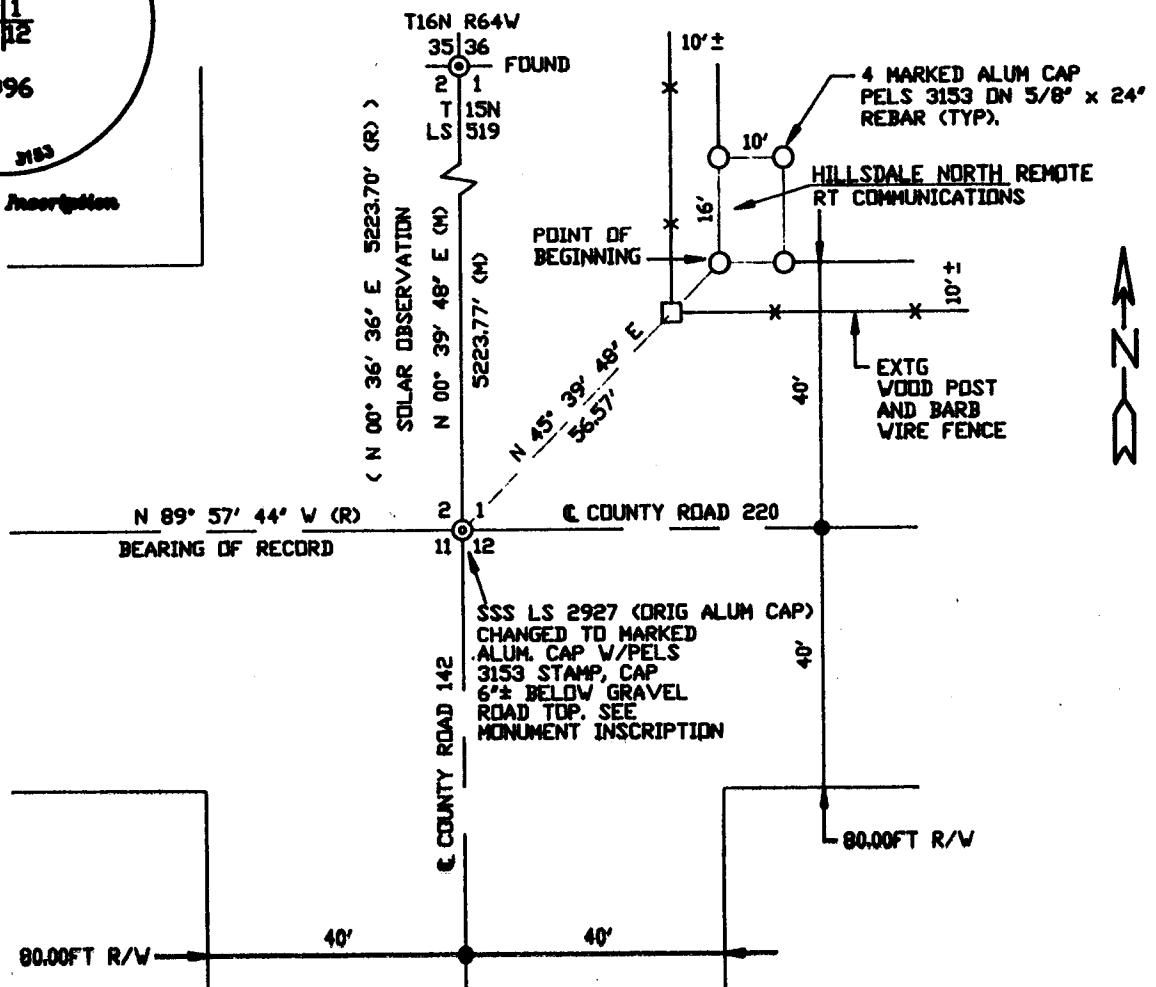
*Reverse side of this form may be used if more space is needed.*

*Record of original survey and citation of source of historical information (if corner is lost or obliterated). Description of corner monumentation evidence found and, or monument and accessories established to perpetuate the location of this corner. Sketch of relative location of monument, accessories, and reference points with course and distance to adjacent corner(s) (if determined in this survey). Method and rationale for reestablishment of lost or obliterated corner.*

Section Corner for 1, 2, 11, 12, T.15N., R.64W. lost and/or obliterated due to prior County road construction.

Rebar w/aluminum cap marked SSS, LS 2927 found.

Verification made by contact with Paul Reid, LS 2927, that this corner was intended for the above identified corner. Further by common agreement with Paul Reid, LS 2927 and W. Armstrong PE & LS 3153, that PE & LS 3153 would replace existing cap on original rebar with more detailed corner identification and this corner record filed.



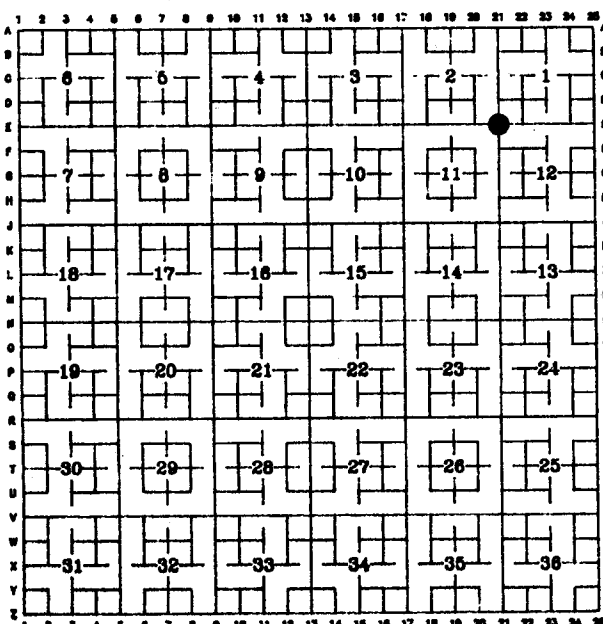
LARAMIE COUNTY CLERK,  
CHEYENNE, WY.

'96 MAR 5 PM 1 01

178687

Date of Field Work: 12/9/95 Office Reference: Field Book #44 page 7

### CROSS INDEX DIAGRAM



Firm/Agency, Address

PREPARED BY:

Armstrong Engineering Services  
815 E. Carlson  
Cheyenne, Wyoming 82009  
(307) 632-2559

This corner record was prepared by me or under my direction and supervision.

SEAL & SIGNATURE

*William B. Armstrong*  
Professional Engineer (Civil) & Land Surveyor  
WILLIAM B. ARMSTRONG  
Date: 12/9/95  
WYOMING

Corner Name: Section Corner Section: 2/1 11/12 T. 15N R. 64W; 6th P.M. Cross-Index No.: E-21

SBRPEPLS/PLSN: March 1994 (CLER SJA)